

Tyne & Wear Archives & Museums

CONSERVATION AND RESTORATION SERVICES

TYNE & WEAR
archives &
museums

Conservation

& Restoration

specialist advice

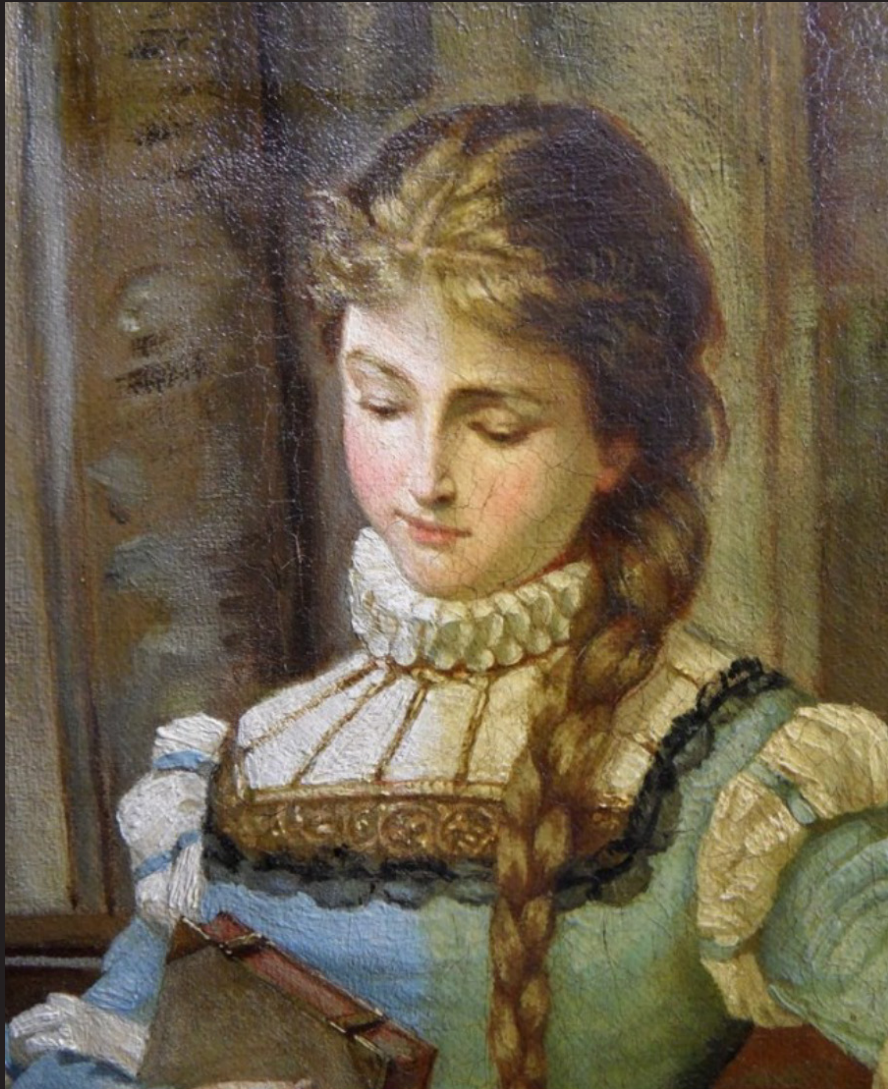
For over 25 years, our Conservation Team has been providing specialist advice and guidance to the public and also carrying out conservation work for individuals, corporate clients and regional collections. This work usually takes place on-site in our specialist studios and includes the following services:

- the conservation of works of art on paper, including watercolours, books and photographs and incorporating a mounting service
- the conservation of paintings on canvas and panels
- the conservation of frames
- the conservation of objects, including ceramics, glass, decorative art, models and sculpture
- advice about good storage and packing methods and safe transport of collection items
- advice about, and treatment of, insect infestation (e.g. moth damage)
- emergency response assistance.

The conservation needs of each object are individually assessed and a treatment proposal drawn up in agreement with the client. The work is priced according to the number of hours required for the agreed level of treatment. Wherever possible, the treatment is reversible and takes into account the object's history, context and future use.

CONSERVATION of frames and paintings on canvas and panels

paintings and frames

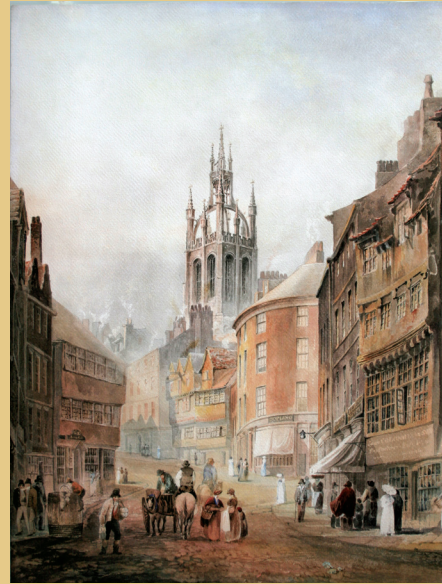


We are able to offer a specialist conservation service for a variety of damaged works of art. Working with care and precision we can restore paintings, and their frames, to their former beauty and functionality.

We carry out structural repairs to torn or weakened canvases and the stabilization of flaking paint. Paint layers can be cleaned and discoloured varnish removed to reveal the original painting beneath, losses to original paint can be filled and retouched in order to restore the original integrity of the image. Damaged frames can be treated by replacing losses and reintegrating with gilding and retouching. The adaption of frames to a conservation standard will considerably improve the life of a painting. Each painting or frame would be individually surveyed to assess its condition before being assigned to one of our specialist team. Work is usually carried out in our specialist on-site studio but, subject to your requirements, can also be carried out off-site. Our clients also receive a fully documented record of any work carried out.

CONSERVATION of Works of Art on Paper

Works of Art on Paper



TM Richardson

Our paper conservators specialise in the treatment of watercolours, prints, drawings and pastels and can offer a range of services.

Conservation treatment of damaged artworks, including the removal of acidic backing boards and window mounts, removal of surface dirt, improvement of discoloured, stained or fox marked art works, deacidification treatment and the repair of tears, patching and retouching.

Mounting and reframing to conservation standards.

Recommendations on storage and environment.

Work is usually carried out in our specialist on-site studio but, subject to your requirements, can also be carried out off-site. Our clients also receive a fully documented record of any work carried out.

CONSERVATION of Objects

Our team are able to provide conservation and restoration services to the highest of standards for a wide variety of objects including:

- ceramics
- glass
- models and sculpture, including ship model repair
- metals including brass, bronze, silver and gilt objects
- decorative art.

A full conservation report and quotation will be provided.

Work is usually carried out in our specialist on-site studio but, subject to your requirements, can also be carried out off-site.



CONSERVATION of Books and Documents



Books & Documents

Books and documents, including parchment, require careful, expert restoration and our specialist team have over 25 years of experience in this process.

We are able to repair damage including torn pages, cracked hinges, staining and damaged covers.

We can also offer a full conservation service for a wide range of paper and parchment documents such as maps, plans, architectural drawings, posters, letters and certificates.

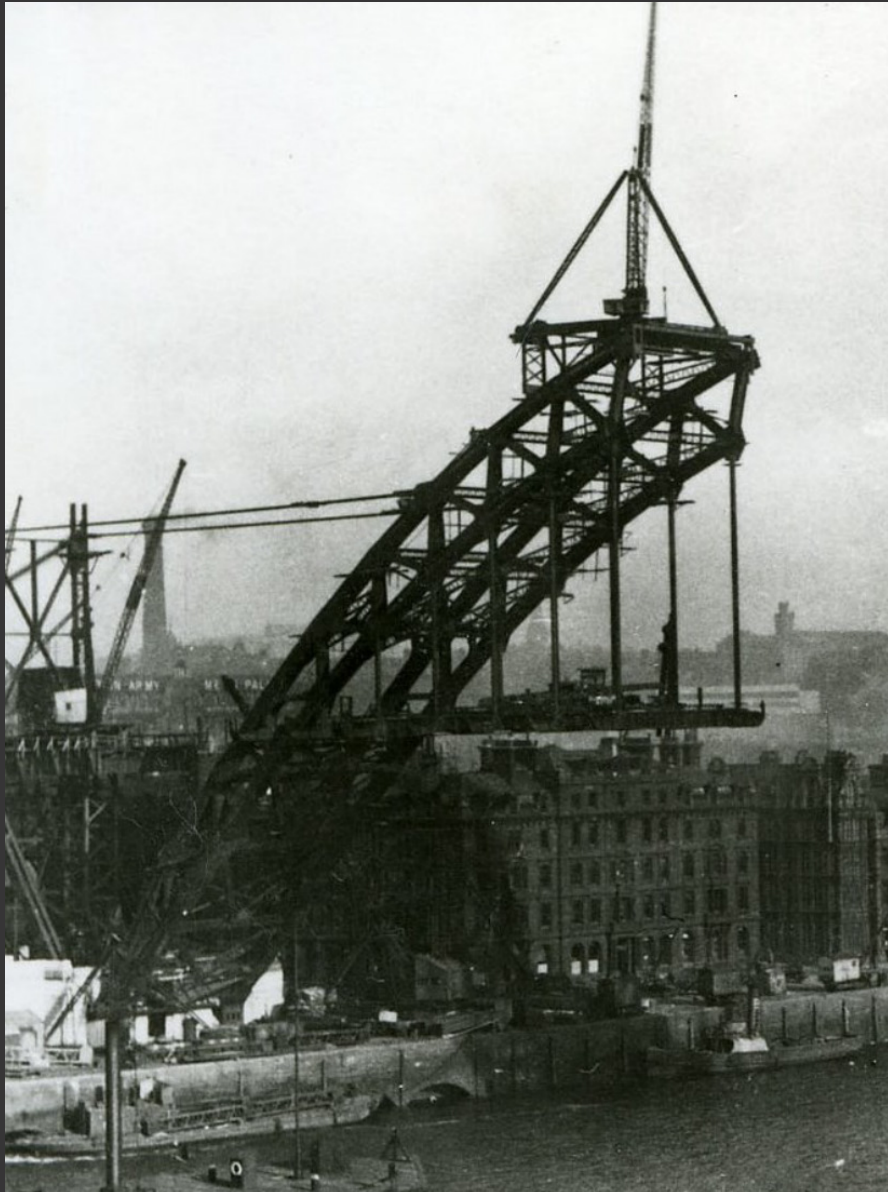
In addition, our team will advise on appropriate storage materials and environment.

A full conservation report and quotation will be provided.

Work is carried out in our on-site studio by a specialist conservator from our team.

CONSERVATION of Photographs

Photographs



We are able to offer a comprehensive service of photographic conservation for the sensitive repair and improvement of spoilt, stained or damaged photographs.

Our services include:

- conservation of original photographic prints including cleaning, repair and mounting
- repair of photographs which have become adhered to glass.

We also offer digital restoration services whereby the damaged print is digitised and an improved copy is produced. This can include restoration of torn or stained areas, altering the colour cast in faded colour or monochrome prints and the creation of monochrome or sepia toned prints from colour originals.

Please note that in digital restoration the condition of the original is unchanged.

Work is carried out in our on-site studio by a specialist conservator from our team.

PREVENTIVE CONSERVATION and Emergency Response

Prevention & Response

Our specialist team are able to offer a range of services to assist and advise on preventive conservation including pest eradication (with full freezer facilities on site) and advice on storage, packing and transportation.



Our conservation team are able to respond to, and assist with, the problems raised by accidents or disasters. We can help to minimise damage to artworks, documents, books, photographs and many other objects following fire or flood.

We are able to supply disaster recovery equipment such as dehumidifiers and wet vacs to help mitigate damage and speed up recovery.

We can offer full freezer facilities to assist with the treatment of flood damaged items.

Our team can also deliver emergency response training for a range of clients including regional museums.

EQUIPMENT FOR HIRE

equipment for hire

Multi-Function Low pressure Table

The painting conservation department is equipped with a Willard Multifunction low pressure suction Table which has a heating and cooling facility as well as humidification and de-humidification functions.

This specialist equipment is available for hire on a daily bases for **£150** per day to professionals. Alternatively we can also offer a professional lining service on request.

For any further information please contact the conservation team directly on 0191 278 1531.

Blast Freezer

Discovery Museum's walk in Blast freezer is available for hire. The freezer is a safe and effective means of pest control for many collection items. The blast freezer runs at -30oC for 72 hours. This is lower than an ordinary chest freezer and is much more effective at killing infestations within collection items at every stage of the insect's life cycle, from eggs to larvae and the adult beetles.

The whole process takes a week from arrival to allow the internal freezer temperature to drop to minus 30 and to slowly return to room temperature after freezing.

We have two different tariffs:-

£167.00 (net VAT) for a full load, where you are guaranteed the sole use of the whole freezer for the treatment period.

or

£117.00 (net VAT) for a part load, where you do not require the whole freezer, and are willing to share with other museums' collections.

For any further information including internal dimensions please contact the conservation team directly on 0191 277 2195.

PROFESSIONAL TRAINING

The conservation team offer professional training in labelling and marking, object cleaning, art handling and emergency response.

Training can be tailored to suit your needs, for further information please contact the conservation team directly on 0191 277 2195.

professional training

OUR TEAM

Tyne & Wear Archives & Museums Conservation Team members are fully qualified in their respective fields and adhere to the national standards of practice set out by ICON. They are all highly experienced and keep up to date in professional practice through attendance at national training events.

Our Team



Ana Flynn, Conservation of paintings and frames.

Ana Flynn was a practising artist for 15 years before training at Camberwell College of Arts where she achieved her degree as an object conservator. She gained her post graduate masters in the conservation of easel paintings at Northumbria. Ana worked as a freelance conservator for two years before joining the conservation team at TWAM as a project conservator for the redevelopment of the Great North Museum, and took up her post as a painting conservator in 2007.

ana.flynn@twmuseums.org.uk

Tel: (0191) 278 1531

OUR TEAM



Matt Parsons

Works of art on paper, books and photographs, including mounting and framing.

After graduating in Fine Art painting and drawing, and working seven years in the manufacturing industry, Matt graduated in Fine Art Conservation (post graduate masters) in 1993 (works on paper). He has since accrued 21 years experience in the conservation of paper artefacts including: engineering drawings, maps, prints, drawings, watercolours, photographs, books, oriental and parchments at Tyne & Wear Archives & Museums.

matt.parsons@twmuseums.org.uk
Tel: (0191) 277 2244



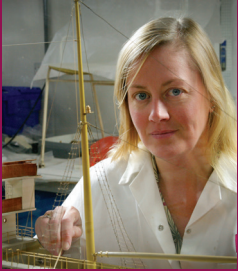
Christina Stephenson

Works of art on paper, books and photographs, including mounting and framing.

After initial studies in the History of Drawing and Printmaking, Christina achieved a Masters degree in Conservation of Fine Art Works on paper. She began her career working in the private sector where clients included museums, historic houses and private collectors. Christina joined Tyne and Wear Archives and Museums in 1999. Her specialist area is conservation of paper based materials including watercolours, pastels, prints and drawings, large format and archival materials, books, parchment and photographs.

christina.stephenson@twmuseums.org.uk
Tel: (0191) 277 2286

OUR TEAM



Rachael Metcalfe

Conservation of objects (glass, ceramics, models, sculpture) and planning for emergencies.

Rachael Metcalfe has almost 20 years of experience working in Museums and Galleries. Prior to training as a conservator she worked as museum technician at The Wordsworth Trust in Cumbria. Rachael obtained her Masters Degree in Object Conservation at Lincoln University and from there went to work in a private conservation practice at AOC Archaeology in Edinburgh, she has also previously worked for a stone and building conservation company. Rachael joined TWAM in 2002, over the years she has worked on a wide range of objects from ship models to Egyptian Mummies, and has assisted with the delivery of large scale museum redevelopments as well as smaller temporary exhibitions.

rachael.metcalfe@twmuseums.org.uk
Tel: (0191) 277 2195



Dawn Stoker

Preventive conservation (including pest management and infestation, storage, transport, environmental control), condition surveys and onsite collection assessments.

Dawn Stoker trained at Lincoln University where she achieved her degree in object conservation. Dawn worked as an organics conservator for three and a half years at National Museums Liverpool before coming to TWAM to take up the position of preventive conservation officer in 2007 since when she has been the conservation lead on a number of large scale storage redevelopment projects involving paintings, natural history, social history and science and industry collections. She has a comprehensive knowledge of environmental monitoring and control equipment, pest monitoring and identification.

dawn.stoker@twmusuems.org.uk
Tel: (0191) 277 2247

OUR TEAM



Jenny Binns
Conservation technician.

Jenny studied her MA in Museum Studies at Newcastle University and has worked for Tyne and Wear Archives and Museums since 2008 in a variety of curatorial roles.

Since 2012 she has worked in the conservation department as the Conservation Technician. She specialises in the conservation and restoration of gilded picture frames, having undertaken IAP training in Oxford and has much experience in the reframing of paintings. She has extensive experience in carrying out detailed conservation assessments and surveys of objects and paintings along with storage improvement and repacking projects.

Jennifer.binns@twmuseums.org.uk

Tel: (0191) 277 2294

A SELECTION OF OUR RECENT CLIENTS

Alnwick Castle

MIMA

Blue Tokay

Bowes Museum

North of England Institute of Mining and
Mechanical Engineers

National Trust - Cragside

Gateshead Council

Seven Stories

Port of Tyne

Robinson Library

TESTIMONIAL

Port of Tyne

Susan Wear, Director of Corporate Affairs said: “The Port of Tyne is delighted with the beautiful restoration of these important historic paintings - TWAM’s conservation team have brought them back to their former glory and back to life. They are now back on permanent display.”

our clients *testimonial*