

WEIRD WALKS WITH ALAN ROBSON MBE

WESTGATE ROAD



START



DISCOVERY MUSEUM

FINISH



CENTRE FOR LIFE



WEST GATE WALL



TYNE THEATRE



COWAN'S MONUMENT



NEWCASTLE CATHEDRAL



THE BLACK GATE

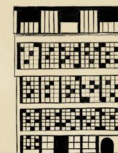
AMEN CORNER



NEWCASTLE CASTLE



DOG LEAP STAIRS



QUAYSIDE

BESSIE SURTEES' HOUSE

THE DARK SIDE OF NEWCASTLE



THE GOODS YARD



CENTRAL STATION



THE LONG STAIRS



THE COOPERAGE



SWING BRIDGE

